

Infrared Cameras

The most portable
infrared online camera

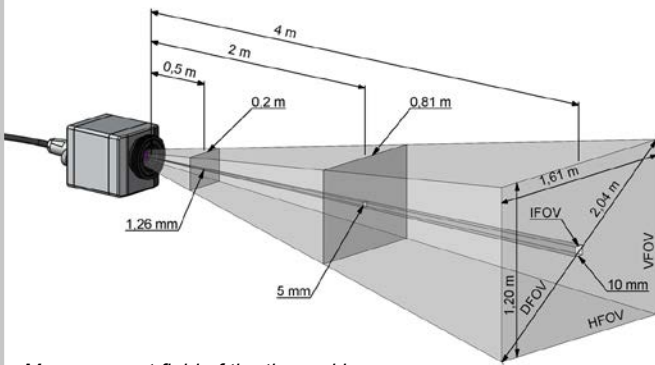
- Temperature measurement -20 °C to 1500 °C
- Small cameras - Ideal for OEM applications
- Up to 128 Hz for fast processes
- Including software package and SDK
- **NEW:** High resolution of 640 x 480 pixels





Automatic hot spot detection

Objects can be examined thermally and **hot or cold positions** (hot or cold spots) can be found automatically.

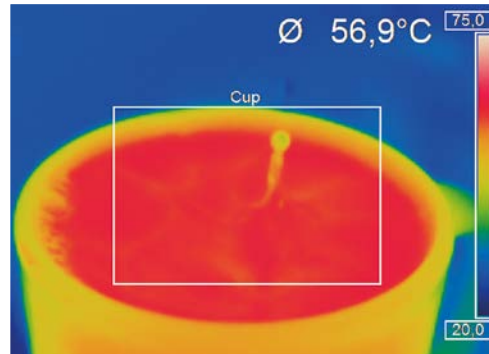


Measurement field of the thermal imager optris PI as an example with the standard lens 23° x 17°



Fast measurements

Temperature distributions at surfaces can be captured precisely within a **millisecond interval**.

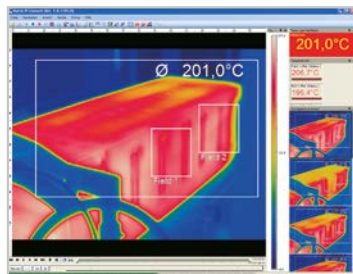


A milk drop falls into a coffee cup

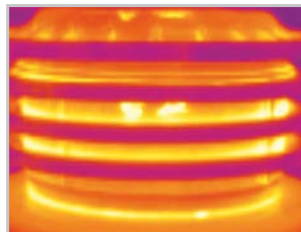


Portable and stationary

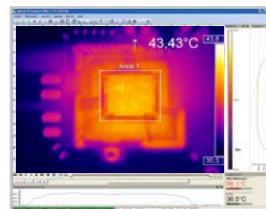
The cameras fill the existing gap between **portable** infrared snap shot cameras and pure **stationary** devices. Possible applications are for example:



Process automation



Test stations



Research & Development



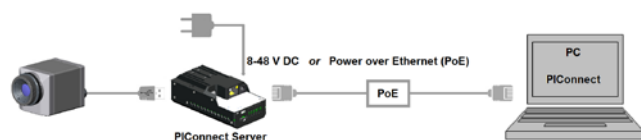
Portable measurement tasks



Easy process integration

Advanced interface concepts allow the integration within networks and automated systems:

- USB cable extension up to 100 m (over Ethernet)

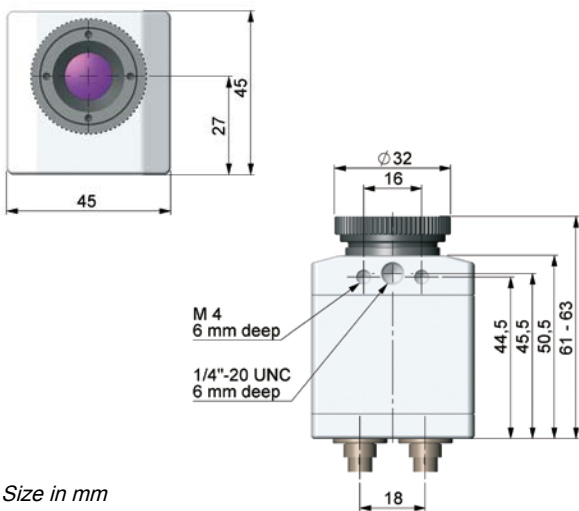


- Industrial process interface (PIF) with two analog inputs, one digital input and three analog outputs or alarm outputs with three optically isolated relays (0-30V/ 400mA); separate fail-safe relay
- Software Development Kit (SDK) for integration of the camera into customer specific software applications via Dynamic-link Library (DLL) and COM-Port

optris® PI 160
Thermal imager with 120 Hz frame rate



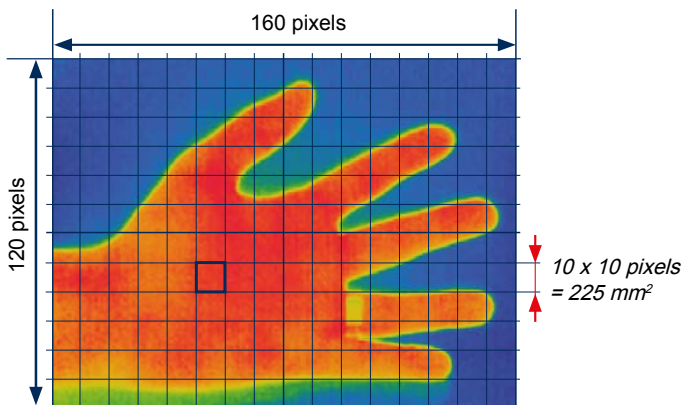
Small camera - Ideal for OEM applications



Fitting lenses for each distance

Hand as device under test

Measuring field size: 240 mm x 180 mm, pixel size: 1.5 mm



Important Features

- Outstanding price-performance ratio
- Extensive license-free analysis software inclusive
- Detector with 160 x 120 pixel
- Thermal images in real time with up to 120 Hz
- Very good thermal sensitivity starting from 80 mK
- Small design (Size: 45 x 45 x 62 mm)
- Thermo Analysis Kit incl. 3 lenses (optional)

Industrial Accessories

The infrared cameras are available with a housing with **protection class IP 67 (NEMA-4)**. The use of the device takes place at the following temperatures...

- ... up to **50 °C** without cooling housing
- ... up to **100 °C** with cooling housing (air cooling)
- ... up to **240 °C** with cooling housing (water cooling)

Additional industrial accessories is available, such as **USB high temperature cables** up to 20 m and mounting systems.

Cooling housing with air and water cooling option



Same measurement field size

using different lenses:

- Standard lens: 0.6 m measuring distance
- Tele lens: 2.13 m measuring distance
- Wide angle lens: 0.27 m measuring distance

Calculation of accurate measurement fields at our website <http://www.optris.com/optics-calculator>.

optris® PI 200 / PI 230
Thermal imager with BI-SPECTRAL technology



Important Features

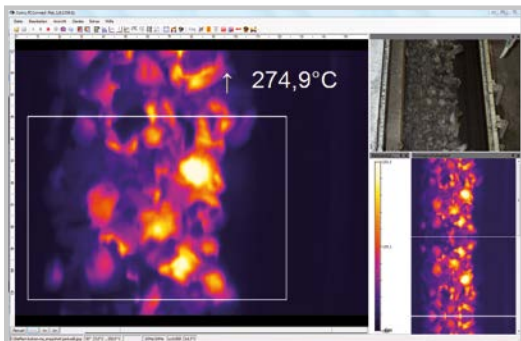
- BI-SPECTRAL technology
- Thermal images in real time with up to 128 Hz (160 x 120 pixel)
- Time synchronic visual image recording with up to 32 Hz (640 x 480 pixel)
- Extensive license-free analysis software inclusive
- Low-light-level technology of visual camera
- Small design (Size: 45 x 45 x 62 mm)
- Thermo Analysis Package incl. 3 lenses (optional)

BI-SPECTRAL technology

With the help of BI-SPECTRAL technology, a **visual image** (VIS) can be combined with a **thermal image** (IR). Both can be finally captured time synchronously:

Monitoring modus:

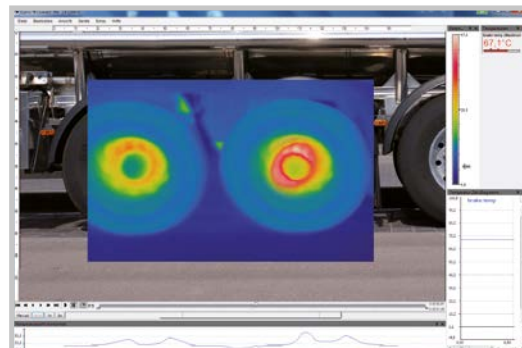
Easy orientation at point of measurement by separate display of visual image



Monitoring of coal on conveyor belt

Cross-fading modus:

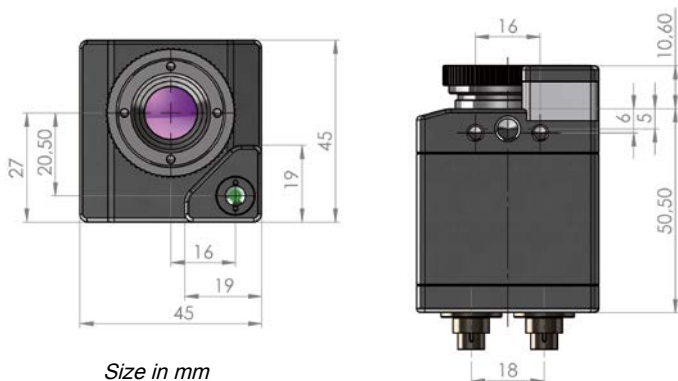
Highlighting of critical temperatures by cross-fading (0...100% transparency) ...



Measurement of break temperature in cross-fading modus

... or by cross-fading defined temperatures (thresholds)

Two cameras in one compact device



Size in mm



Cross-fading of VIS image above temperatures of 35 °C

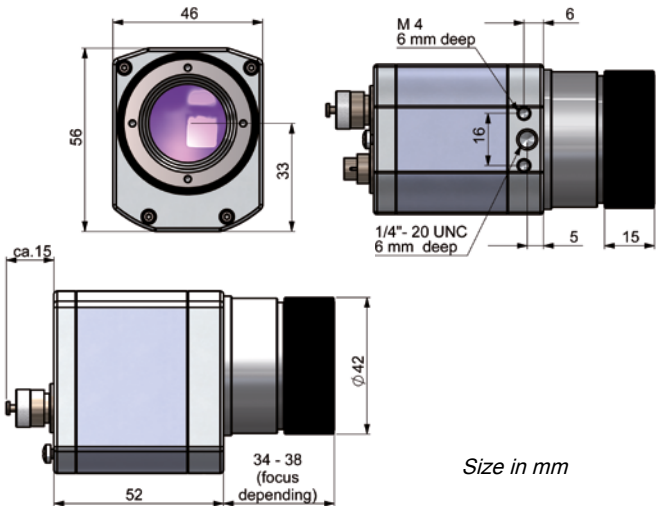
optris® PI 400 / PI 450
Thermal imager with 382 x 288 pixels



Important Features

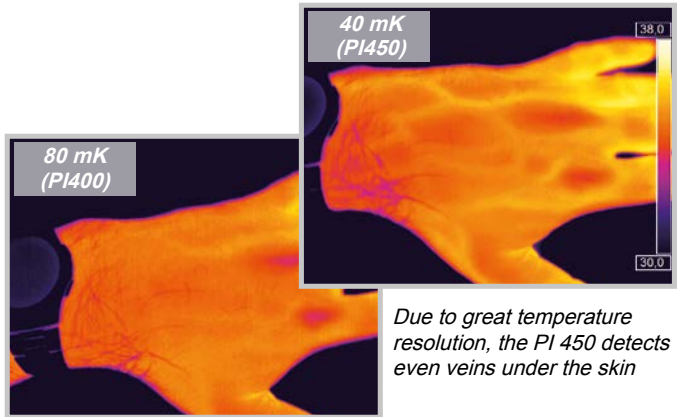
- Detector with 382 x 288 pixels
- Fast real-time thermal imager with up to 80 Hz
- Very high thermal sensitivity with 80 mK (PI 400) and 40 mK (PI 450)
- Smallest camera in its class (46 x 56 x 90 mm)
- Lightweight (320 g incl. optics)
- Extensive license-free analysis software inclusive
- Exchangeable lenses & industrial accessories

Smallest camera in its class



High temperature resolution of 40 mK

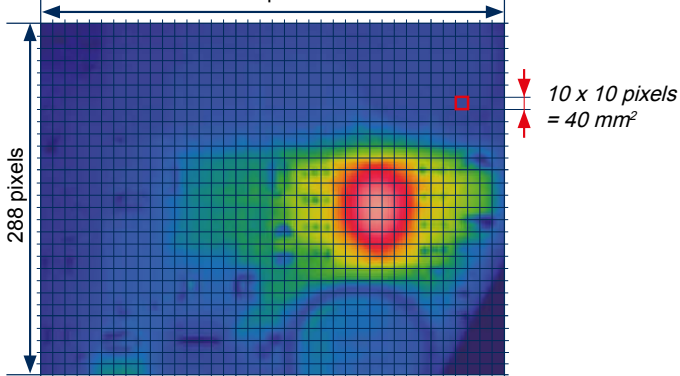
The optris PI 450 offering a resolution of 40 mK is used to detect tiny temperature differences, for example in product quality inspections or medical prophylaxis.



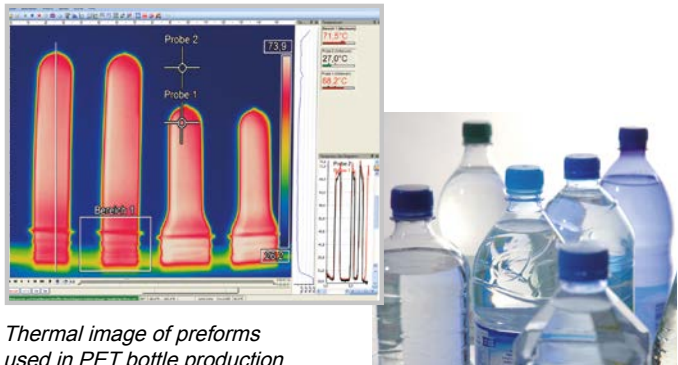
Due to great temperature resolution, the PI 450 detects even veins under the skin

80 Hz data capturing with high resolution

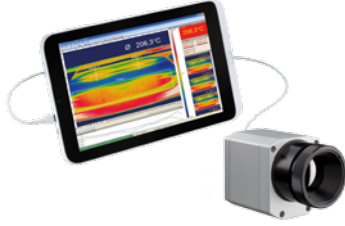
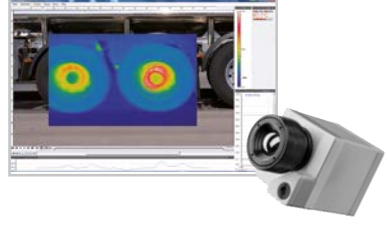
SMD part as measurement object:
Size of part: 32 mm x 24 mm, pixel size: 0,08 mm
382 pixels



The camera displays and stores thermal images with high resolution (382 x 288 px) at full frame rate of 80 Hz (80 images per second).



Thermal image of preforms used in PET bottle production

| Basis model | PI 160 | PI 200 / PI 230 |
|--|--|---|
| Type | IR | BI-SPECTRAL |
| |  |  |
| Scope of supply | USB camera incl. 1 lens, USB cable (1 m), table tripod, PIF cable incl. terminal block (1 m), software package optris PI Connect, aluminum case | USB camera with 1 lens and BI-SPECTRAL technology, USB cable (1 m), table tripod, focussing tool, PIF cable incl. terminal block (1 m), software package optris PI Connect, aluminum case |
| Detector | FPA, uncooled (25 µm x 25 µm) | FPA, uncooled (25 µm x 25 µm) |
| Optical resolution | 160 x 120 pixel | 160 x 120 pixel |
| Spectral range | 7.5 - 13 µm | 7.5 - 13 µm |
| Temperature ranges | -20 °C...100 °C, 0 °C...250 °C, 150 °C...900 °C, additional range: 200 °C...1500 °C (option)* | -20 °C...100 °C, 0 °C...250 °C, 150 °C...900 °C, additional range: 200 °C...1500 °C (option)* |
| Frame rate | 120 Hz | 128 Hz*** |
| Optics (FOV) | 23° x 17° FOV / f = 10 mm <u>or</u> 6° x 5° FOV / f = 35.5 mm <u>or</u> 41° x 31° FOV / f = 5.7 mm <u>or</u> 72° x 52° FOV / f = 3.3 mm | 23° x 17° FOV** / f = 10 mm <u>or</u> 6° x 5° FOV / f = 35.5 mm <u>or</u> 41° x 31° FOV** / f = 5.7 mm <u>or</u> 72° x 52° FOV / f = 3.3 mm |
| Thermal sensitivity (NETD) | 0.08 K with 23° x 17° FOV / F = 0,8 0.3 K with 6° x 5° FOV / F = 1,6 0.1 K with 41° x 31° FOV and 72° x 52° FOV / F = 1 | 0.08 K with 23° x 17° FOV / F = 0,8 0.3 K with 6° x 5° FOV / F = 1,6 0.1 K with 41° x 31° FOV and 72° x 52° FOV / F = 1 |
| Option for visual camera (only for BI-SPECTRAL camera) | - | Optical resolution: 640 x 480 Pixel, Frame rate: 32 Hz*** Optics (FOV): 54° x 40° (PI 200), 30° x 23° (PI 230) |
| Accuracy | ±2 °C or ±2 % | ±2 °C or ±2 % |
| PC interface | USB 2.0 | USB 2.0 |
| Process interface (PIF) | | |
| Standard PIF | 0-10V input, digital input (max. 24V), 0-10V output | 0-10V input, digital input (max. 24V), 0-10V output |
| Industrial PIF | 2x 0-10V inputs, digital input (max. 24V), 3x 0-10V outputs, 3x relay (0-30V/ 400mA), fail safe relay | 2x 0-10V inputs, digital input (max. 24V), 3x 0-10V outputs, 3x relay (0-30V/ 400mA), fail safe relay |
| Ambient temperature (T _{Amb}) | 0 °C...50 °C | 0 °C...50 °C |
| Storage temperature | -40 °C...70 °C | -40 °C...70 °C |
| Relative humidity | 20 - 80 %, non condensing | 20 - 80 %, non condensing |
| Enclosure (size / rating) | 45 mm x 45 mm x 62 mm / IP 67 (NEMA 4) | 45 mm x 45 mm x 62 mm / IP 67 (NEMA 4) |
| Weight | 195 g, incl. lens | 215 g, incl. lens |
| Shock / vibration ¹⁾ | IEC 60068-2-27 (25g und 50g) / IEC 60068-2-6 (sinus-shaped); IEC 60068-2-64 (broadband noise) | IEC 60068-2-27 (25g und 50g) / IEC 60068-2-6 (sinus-shaped); IEC 60068-2-64 (broadband noise) |
| Tripod mount | 1/4-20 UNC | 1/4-20 UNC |
| Power supply | USB powered | USB powered |

¹⁾ for more details see operators manual

The optris PI 160 / PI 200 as Thermal Analysis Package

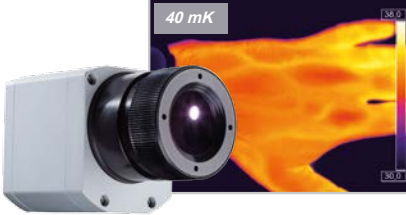

- Infrared camera optris PI 160 or PI 200
- 3 lenses (23°, 6°, 41°) incl. calibration certificate
- USB cable (1 m and 10 m)
- Table tripod (20 - 63 cm)
- PIF cable with terminal block (1 m)
- Software package optris PI Connect
- Aluminum case



* The additional measurement range is not available for 72° HFOV optics





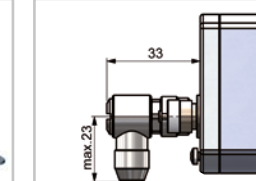
** For ideal combination of IR and VIS image, a 41° HFOV lens is recommended (optris PI 200). For the PI 230, a 23° HFOV lens is recommended.

*** The following options can be set:
Option 1 (IR with 96 Hz at 160 x 120 px; VIS with 32 Hz at 640 x 480 px)
Option 2 (IR with 128 Hz at 160 x 120 px; VIS with 32 Hz at 596 x 447 px)

| Basis model | PI 400 / PI 450 | PI 640 |
|---|--|--|
| Type | IR | IR |
| |  |  |
| Scope of supply | USB camera incl. 1 lens, USB cable (1 m), table tripod, PIF cable incl. terminal block (1 m), software package optris PI Connect, aluminum case | USB camera incl. 1 lens, USB cable (1 m), table tripod, PIF cable incl. terminal block (1 m), software package optris PI Connect, aluminum case |
| Detector | FPA, uncooled (25 µm x 25 µm) | FPA, uncooled (17 µm x 17 µm) |
| Optical resolution | 382 x 288 pixel | 640 x 480 pixel |
| Spectral range | 7.5 - 13 µm | 7.5 - 13 µm |
| Temperature ranges | -20 °C...100 °C, 0 °C...250 °C, 150 °C...900 °C additional range: 200 °C...1500 °C (option for PI 400 only) | -20 °C...100 °C, 0 °C...250 °C, 150 °C...900 °C |
| Frame rate | 80 Hz | 32 Hz |
| Optics (FOV) | 38° x 29° FOV / f = 15 mm <u>or</u> 62° x 49° FOV / f = 8 mm <u>or</u> 13° x 10° FOV / f = 41 mm | 33° x 25° FOV / f = 18.4 mm |
| Thermal sensitivity (NETD) | 0.08 K / 0.04 K with 38° x 29° FOV / F = 0.8 0.08 K / 0.04 K with 62° x 49° FOV / F = 0.8 0.1 K / 0.06 K with 13° x 10° FOV / F = 1.0 | 0,075 K with 33° x 25° FOV / F = 0.8 |
| Option for visual camera (only for BI-SPECTRAL camera) | - | - |
| Accuracy | ±2 °C or ±2 % | ±2 °C or ±2 % |
| PC interface | USB 2.0 | USB 2.0 |
| Process interface (PIF) | 0-10V input, digital input (max. 24V), 0-10V output | 0-10V input, digital input (max. 24V), 0-10V output |
| Standard PIF | 2x 0-10V inputs, digital input (max. 24V), 3x 0-10V outputs, 3x relay (0-30V/ 400mA), fail safe relay | 2x 0-10V inputs, digital input (max. 24V), 3x 0-10V outputs, 3x relay (0-30V/ 400mA), fail safe relay |
| Industrial PIF | | |
| Ambient temperature (T _{Amb}) | 0 °C...50 °C / 0 °C...70 °C | 0 °C...70 °C |
| Storage temperature | -40 °C...70 °C / -40 °C...85 °C | -40 °C...70 °C |
| Relative humidity | 20 - 80%, non condensing | 20 - 80%, non condensing |
| Enclosure (size / rating) | 46 mm x 56 mm x 90 mm / IP 67 (NEMA 4) | 46 mm x 56 mm x 90 mm / IP 67 (NEMA 4) |
| Weight | 320 g, incl. lens | 320 g, incl. lens |
| Shock / vibration ¹⁾ | IEC 60068-2-27 (25g und 50g) / IEC 60068-2-6 (sinus-shaped); IEC 60068-2-64 (broadband noise) | IEC 60068-2-27 (25g und 50g) / IEC 60068-2-6 (sinus-shaped); IEC 60068-2-64 (broadband noise) |
| Tripod mount | 1/4-20 UNC | 1/4-20 UNC |
| Power supply | USB powered | USB powered |

¹⁾ for more details see operators manual

Accessory for optris PI thermal imagers

| | | | | |
|---|---|---|---|---|
|  |  |  |  |  |
| Cooling housing and mounting angle, adjustable in two axes* | Mounting flange, for cooling housing* | High temperature USB cable | Mounting base for camera and protective housing (stainless steel), adjustable in two axes | Angular connector |

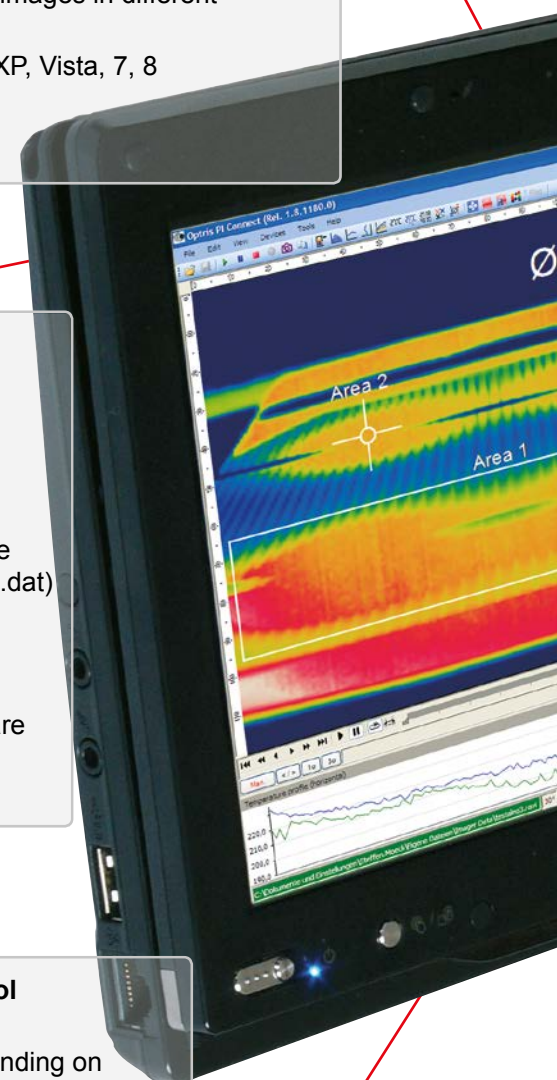
* Not for PI 200 / PI 230 (BI-SPECTRAL camera versions)



Extensive infrared camera software

- No additional costs
- No restrictions in licencing
- Modern software with intuitive user interface
- Remote control of camera via software
- Display of multiple camera images in different windows
- Compatible with Windows XP, Vista, 7, 8 and Linux (ubuntu)*

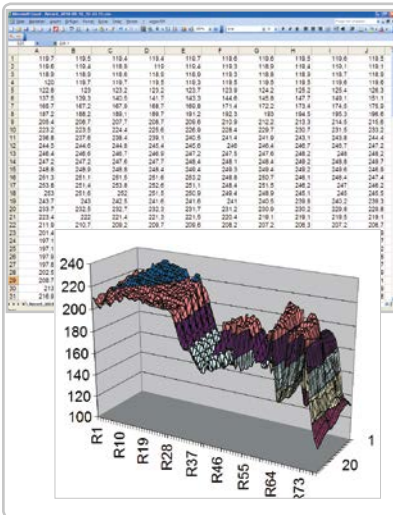
1.



6.

Temperature data analysis and documentation

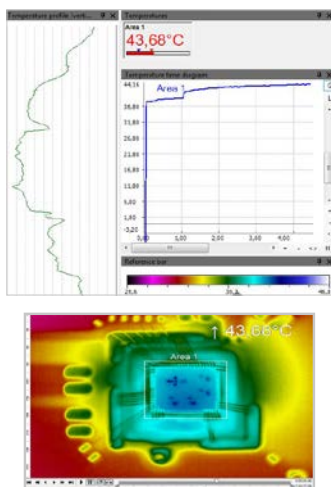
- Triggered data collection
- Radiometric video sequences (*.ravi)
- Radiometric snapshots (*.tiff)
- Text files including complete temperature information for analysis in Excel (*.csv, *.dat)
- Data with color information for standard programs such as Photoshop or Windows Media Player (*.avi, *.tiff)
- Data transfer in real time to other software programs via DLL or Comport interfaces



Automatic process and quality control

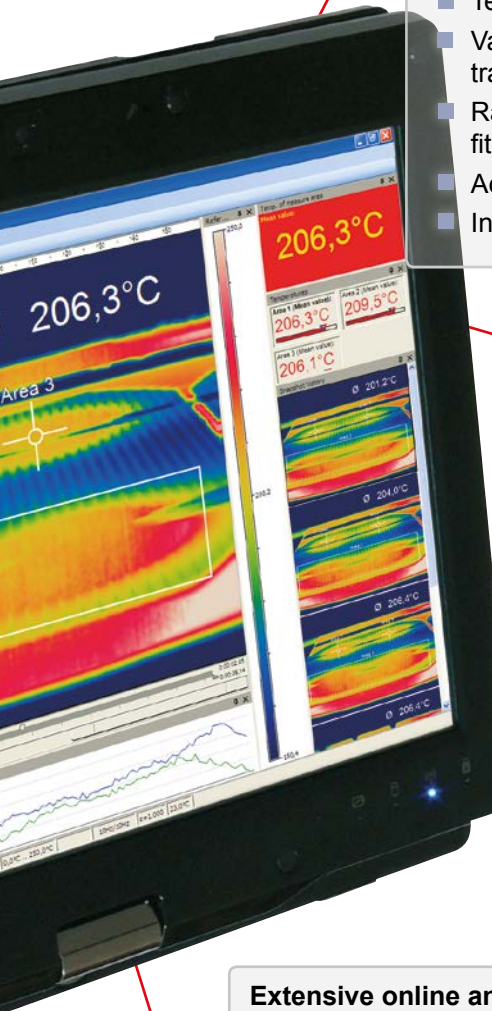
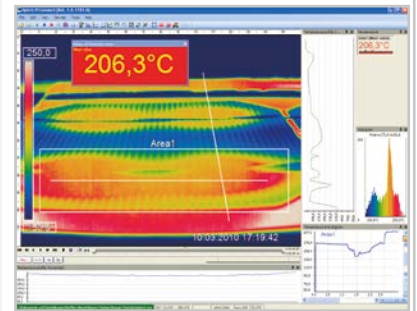
- Individual setup of alarm levels depending on the process
- BI-SPECTRAL process monitoring (IR and VIS) for easy orientation at point of measurement
- Definition of visual or acoustic alarms and analog data output via the process interface
- Analog and digital signal input (process parameter)
- External communication of software via Comports and DLL
- Adjustment of thermal image via reference values

5.



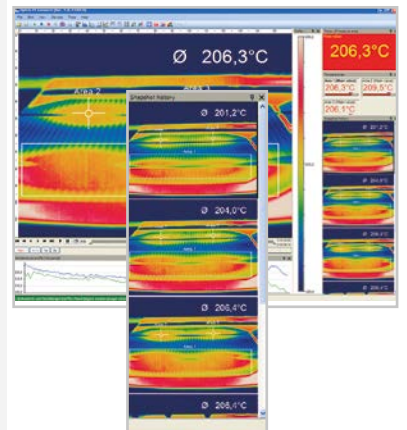
2. High level of individualization for customer specific display

- Different layout options for an individual setup (arrangement of windows, toolbar)
- Temperature display in °C or °F
- Various language options including a translation tool
- Range of individual measurement parameter fitting for each application
- Adaption of thermal image (mirror, rotate)
- Individual start options (full screen, hidden, etc.)



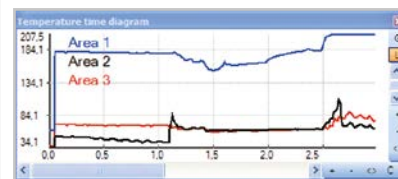
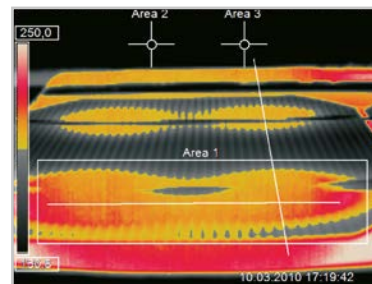
3. Video recording and snapshot function (IR or BI-SPECTRAL)

- Recording of video sequences and detailed frames for further analysis or documentation
- BI-SPECTRAL video analysis (IR and VIS) in order to highlight critical temperatures
- Adjustment of recording frequency to reduce data volume
- Display of snapshot history for immediate analysis



4. Extensive online and offline data analysis

- Analysis supported by measurement fields, automatic hot and cold spot searching
- Real time temperature information within main window as digital or graphic display
- Logic operation of temperature information (measurement fields and image substraction)
- Slow motion repeat of radiometric files and analysis without camera being connected
- Editing of sequences such as cutting and saving of individual images
- Various color palettes to highlight thermal contrasts



Example pictures: String soldering at solar cells
 *Windows is a registered trademark of Microsoft Corporation.

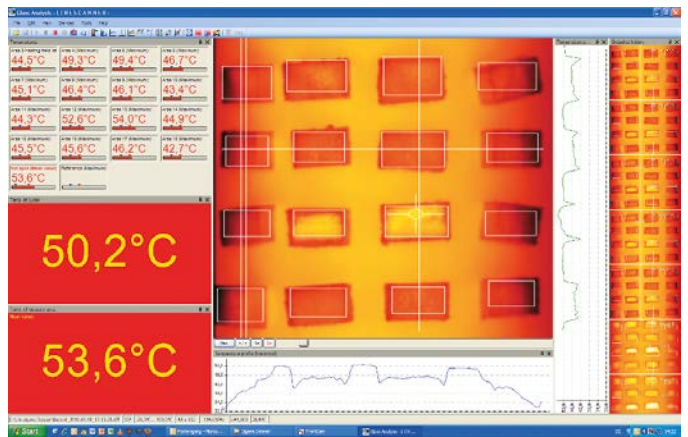
The license-free software optris PI Connect comes with a linescanner function. The linescanner mode is generally used for **processes with moving objects** under test, such as measurement of rotary kilns or measurement of great lots at conveyor belts (batch process).

Overview of the advantages:

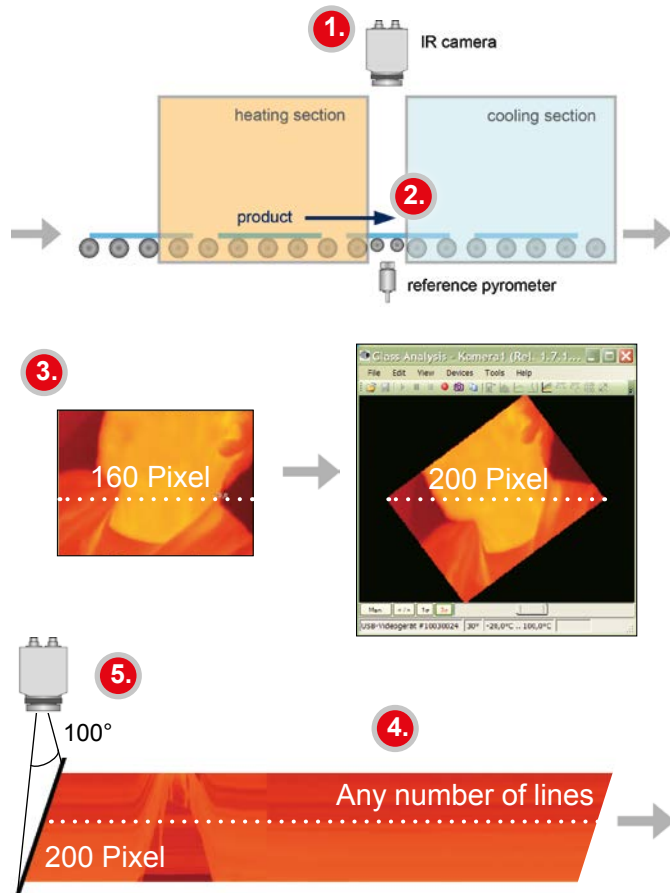
1. Simple monitoring of process with limited optical access
2. Indirect visualization of heat distribution within ovens via camera installation at the oven exit
3. Extension of number of pixel from 160 pixel up to 200 pixel through use of picture diagonal
4. Up to 128 Hz data recording of unlimited lines which in turn can produce thermal images of any resolution
5. Up to 100° FOV as a line for detailed process analysis such as at wide conveyor belts



Application example: Rotary kiln within the chemical industry



Layout example of linescanner function display



Only three steps to initialize the function:

Step 1:

Activate the linescanner function and define the position of the line in the thermal image. The camera itself can be used for adjustment.

Step 2:

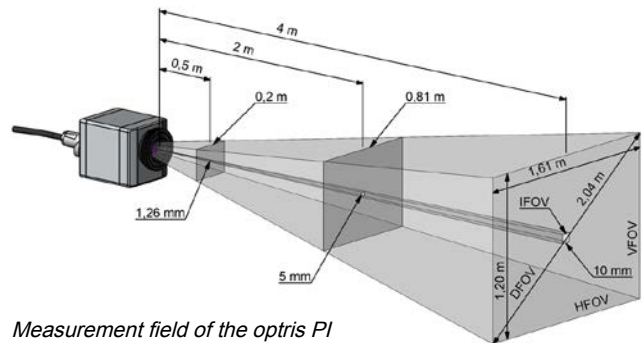
Setup of the linescanner function e.g. the number of displayed lines or the trigger definition for automatic picture storage.

Step 3:

Definition of individual layouts e.g. display of stored images in a snapshot history.

The variety of different lenses offers the possibility to precisely measure objects in **different distances**. We offer lenses for close, standard distances and large distances. Different parameters are important if using infrared cameras. They display the connection between the distance of the measured object and the size of the pixel. When choosing a lens, the following data should be considered:

- **HFOV**: Horizontal enlargement of the total measuring field at object level
- **VFOV**: Vertical enlargement of the total measuring field at object level
- **IFOV**: Size of the single pixel at object level
- **DFOV**: Diagonal dimension of the total measuring field at the object level
- **MFOV**: Recommended, smallest measured object size of 3 x 3 pixel



Measurement field of the optris PI representing the 23° x 17° lens

Measurement field sizes for any distances can be calculated online <http://www.optris.com/optics-calculator>.

| PI 160/200/230 160 x 120 px | Focal length | Angle | Minimum distance* | Distance to object [m] | | | | | | | | | | | | |
|-----------------------------------|--------------|--------------------------------|-------------------|------------------------|-------|------|------|------|------|------|------|------|-------|------|-------|-------|
| | | | | | 0.02 | 0.1 | 0.2 | 0.3 | 0.5 | 1 | 2 | 4 | 6 | 10 | 30 | 100 |
| O23 Standard lens | 10 mm | 23° 17° 29° 2.52 mrad | 0.2 m | HFOV [m] | 0.008 | 0.04 | 0.08 | 0.12 | 0.20 | 0.40 | 0.81 | 1.61 | 2.42 | 4.0 | 12.1 | 40.3 |
| | | | | VFOV [m] | 0.006 | 0.03 | 0.06 | 0.09 | 0.15 | 0.30 | 0.60 | 1.20 | 1.79 | 3.0 | 9.0 | 29.9 |
| | | | | DFOV [m] | 0.010 | 0.05 | 0.10 | 0.15 | 0.26 | 0.51 | 1.02 | 2.04 | 3.06 | 5.1 | 15.3 | 51.1 |
| | | | | IFOV [mm] | 0.1 | 0.3 | 0.5 | 0.8 | 1.3 | 2.5 | 5.0 | 10.1 | 15.1 | 25.2 | 75.6 | 252.0 |
| O6 Tele lens | 35.5 mm | 6° 5° 8° 0.71 mrad | 0.5 m | HFOV [m] | | | | | 0.06 | 0.11 | 0.23 | 0.45 | 0.68 | 1.1 | 3.4 | 11.3 |
| | | | | VFOV [m] | | | | | 0.04 | 0.08 | 0.17 | 0.34 | 0.50 | 0.8 | 2.5 | 8.4 |
| | | | | DFOV [m] | | | | | 0.07 | 0.14 | 0.28 | 0.56 | 0.84 | 1.4 | 4.2 | 14.1 |
| | | | | IFOV [mm] | | | | | 0.4 | 0.7 | 1.4 | 2.8 | 4.2 | 7.1 | 21.2 | 70.5 |
| O48 Wide angle lens | 5.7 mm | 41° 31° 52° 4.72 mrad | 0.2 m | HFOV [m] | 0.015 | 0.08 | 0.15 | 0.23 | 0.38 | 0.76 | 1.51 | 3.02 | 4.53 | 7.6 | 22.7 | 75.6 |
| | | | | VFOV [m] | 0.011 | 0.05 | 0.11 | 0.16 | 0.27 | 0.55 | 1.09 | 2.19 | 3.28 | 5.5 | 16.4 | 54.7 |
| | | | | DFOV [m] | 0.019 | 0.10 | 0.19 | 0.29 | 0.49 | 0.97 | 1.95 | 3.90 | 5.85 | 9.7 | 29.2 | 97.5 |
| | | | | IFOV [mm] | 0.09 | 0.5 | 0.9 | 1.42 | 2.4 | 4.7 | 9.5 | 18.9 | 28.3 | 47.2 | 141.7 | 472.3 |
| O72 Wide angle lens | 3.3 mm | 72° 52° 95° 9.08 mrad | 0.2 m | HFOV [m] | 0.029 | 0.15 | 0.29 | 0.44 | 0.73 | 1.45 | 2.91 | 5.81 | 8.72 | 14.5 | 43.6 | 145.3 |
| | | | | VFOV [m] | 0.020 | 0.10 | 0.20 | 0.29 | 0.49 | 0.98 | 1.95 | 3.90 | 5.85 | 9.80 | 29.3 | 97.5 |
| | | | | DFOV [m] | 0.043 | 0.22 | 0.43 | 0.65 | 1.09 | 2.17 | 4.34 | 8.68 | 13.02 | 21.7 | 65.1 | 217.0 |
| | | | | IFOV [mm] | 0.2 | 0.9 | 1.8 | 2.7 | 4.5 | 9.1 | 18.2 | 36.3 | 54.5 | 90.8 | 272.5 | 908.2 |

| PI400/450 382 x 288 px | Focal length | Angle | Minimum distance* | Distance to object [m] | | | | | | | | | | | | |
|--|--------------|--------------------------------|-------------------|------------------------|-------|------|------|------|------|------|------|------|------|------|------|-------|
| | | | | | 0.02 | 0.1 | 0.2 | 0.3 | 0.5 | 1 | 2 | 4 | 6 | 10 | 30 | 100 |
| O38 Standard lens | 15 mm | 38° 29° 49° 1.81 mrad | 0.2 m | HFOV [m] | 0.014 | 0.07 | 0.14 | 0.21 | 0.35 | 0.69 | 1.39 | 2.77 | 4.16 | 6.9 | 20.8 | 69.3 |
| | | | | VFOV [m] | 0.010 | 0.05 | 0.10 | 0.15 | 0.25 | 0.51 | 1.02 | 2.03 | 3.05 | 5.1 | 15.2 | 50.8 |
| | | | | DFOV [m] | 0.018 | 0.09 | 0.18 | 0.28 | 0.46 | 0.92 | 1.84 | 3.68 | 5.52 | 9.2 | 27.6 | 92.0 |
| | | | | IFOV [mm] | 0.1 | 0.2 | 0.4 | 0.5 | 0.9 | 1.8 | 3.6 | 7.3 | 10.9 | 18.1 | 54.4 | 181.3 |
| O13 Tele lens | 41 mm | 13° 10° 17° 0.61 mrad | 0.5 m | HFOV [m] | | | | | 0.12 | 0.23 | 0.47 | 0.94 | 1.40 | 2.3 | 7.0 | 23.4 |
| | | | | VFOV [m] | | | | | 0.09 | 0.17 | 0.35 | 0.70 | 1.05 | 1.7 | 5.2 | 17.5 |
| | | | | DFOV [m] | | | | | 0.15 | 0.29 | 0.58 | 1.17 | 1.75 | 2.9 | 8.8 | 29.2 |
| | | | | IFOV [mm] | | | | | 0.3 | 0.6 | 1.2 | 2.5 | 3.7 | 6.1 | 18.4 | 61.2 |
| O62 Wide angle lens | 8 mm | 62° 49° 74° 3.14 mrad | 0.5 m | HFOV [m] | 0.024 | 0.12 | 0.24 | 0.36 | 0.60 | 1.20 | 2.40 | 4.80 | 7.20 | 12.0 | 36.0 | 119.9 |
| | | | | VFOV [m] | 0.018 | 0.09 | 0.18 | 0.27 | 0.45 | 0.90 | 1.80 | 3.60 | 5.41 | 9.0 | 27.0 | 90.1 |
| | | | | DFOV [m] | 0.030 | 0.15 | 0.30 | 0.45 | 0.75 | 1.50 | 3.00 | 6.00 | 8.99 | 15.0 | 45.0 | 149.9 |
| | | | | IFOV [mm] | 0.1 | 0.3 | 0.6 | 0.9 | 1.6 | 3.1 | 6.3 | 12.6 | 18.8 | 31.4 | 94.2 | 314.0 |
| PI 640 O33 Standard lens 640 x 480 px | 18.4 mm | 33° 25° 41° 0.93 mrad | 0.2 m | HFOV [m] | 0.012 | 0.06 | 0.12 | 0.18 | 0.30 | 0.60 | 1.19 | 2.37 | 3.55 | 5.9 | 17.8 | 59.2 |
| | | | | VFOV [m] | 0.009 | 0.04 | 0.09 | 0.13 | 0.22 | 0.44 | 0.89 | 1.77 | 2.66 | 4.4 | 13.3 | 44.3 |
| | | | | DFOV [m] | 0.015 | 0.07 | 0.15 | 0.22 | 0.37 | 0.75 | 1.20 | 2.99 | 4.49 | 7.5 | 22.4 | 74.8 |
| | | | | IFOV [mm] | 0.02 | 0.1 | 0.2 | 0.3 | 0.5 | 0.9 | 1.9 | 3.7 | 5.6 | 9.3 | 27.8 | 92.6 |

Table with examples showing what spot sizes and pixel sizes will be reached in which distance. For individual configuration there are different lenses available. Wide angle lenses have a radial distortion due to their large opening angle; the software PIConnect contains an algorithm which corrects this distortion.

*Note: The accuracy of measurement can be outside of the specifications for distances below the defined minimum distance.



Optris GmbH
Ferdinand-Buisson-Str. 14 • 13127 Berlin • Germany
Tel.: +49 (0)30 500 197-0 • Fax: +49 (0)30 500 197-10
Email: sales@optris.com • Internet: www.optris.com

